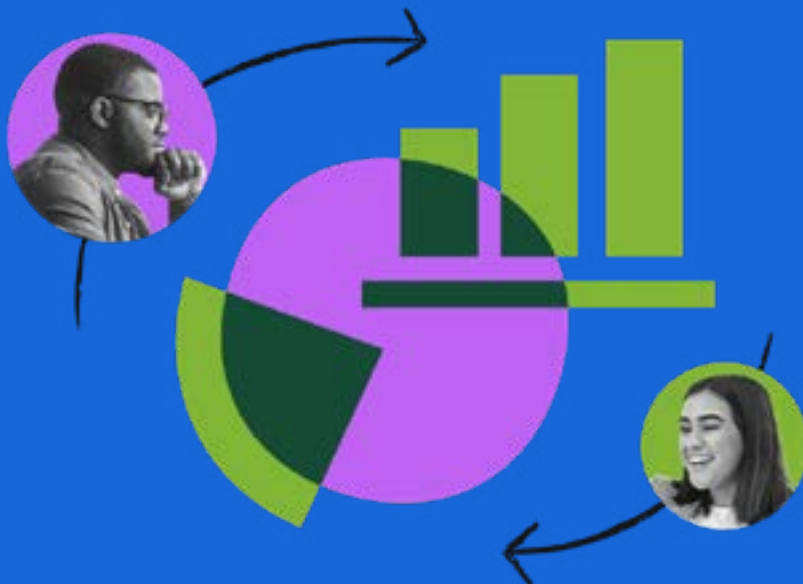




Assets Data Manager Overview

Complete, correct, and current asset data
for smart decision making





Navigating the complexity of asset and configuration management in a multi-cloud environment

The proliferation of digital solutions is reshaping the way organizations handle their asset inventory and configuration management systems. The rise in the adoption of multi-cloud and multi-purpose systems is driving exponential growth in the complexity of managing interconnected services, systems, and technologies.

Managing asset inventory and configuration management systems requires coordination across multiple teams and tools, including cloud, inventory, security, and financial systems. Unfortunately, data often becomes duplicated, outdated, and scattered, which causes organizations to face operational and compliance issues, increased costs, and security vulnerabilities.

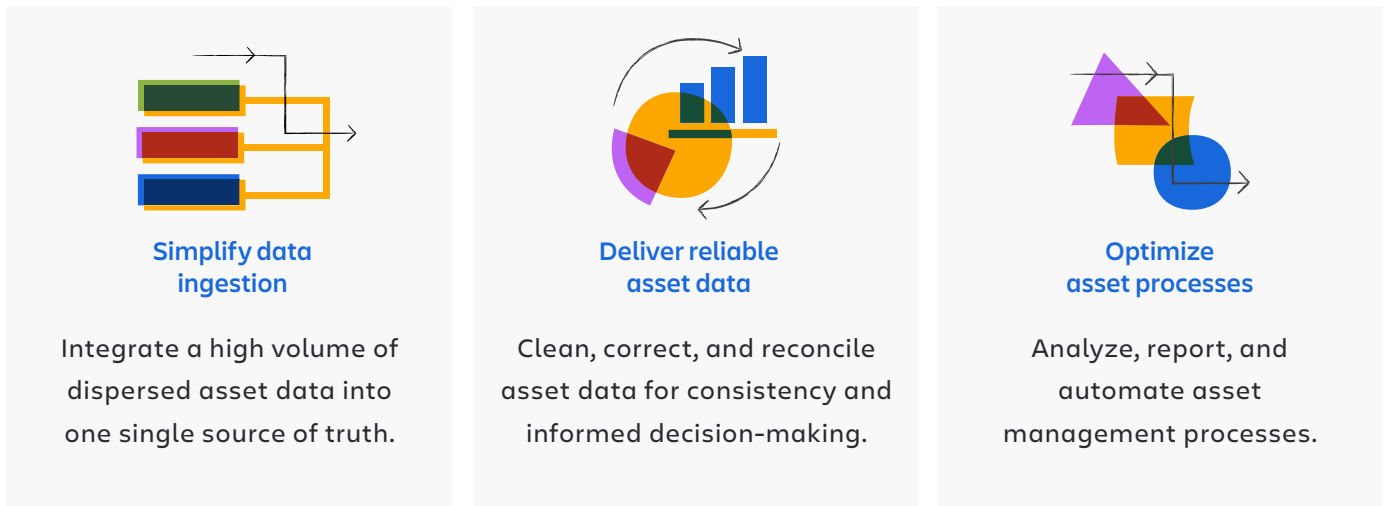
This complexity brings a significant challenge: identifying the “golden record” of asset and configuration data.

To tackle this challenge, it is essential to integrate and reconcile the multiple data sources and establish a single source of truth that you can depend on to make operational and strategic decisions.

Making every asset record a “golden record”

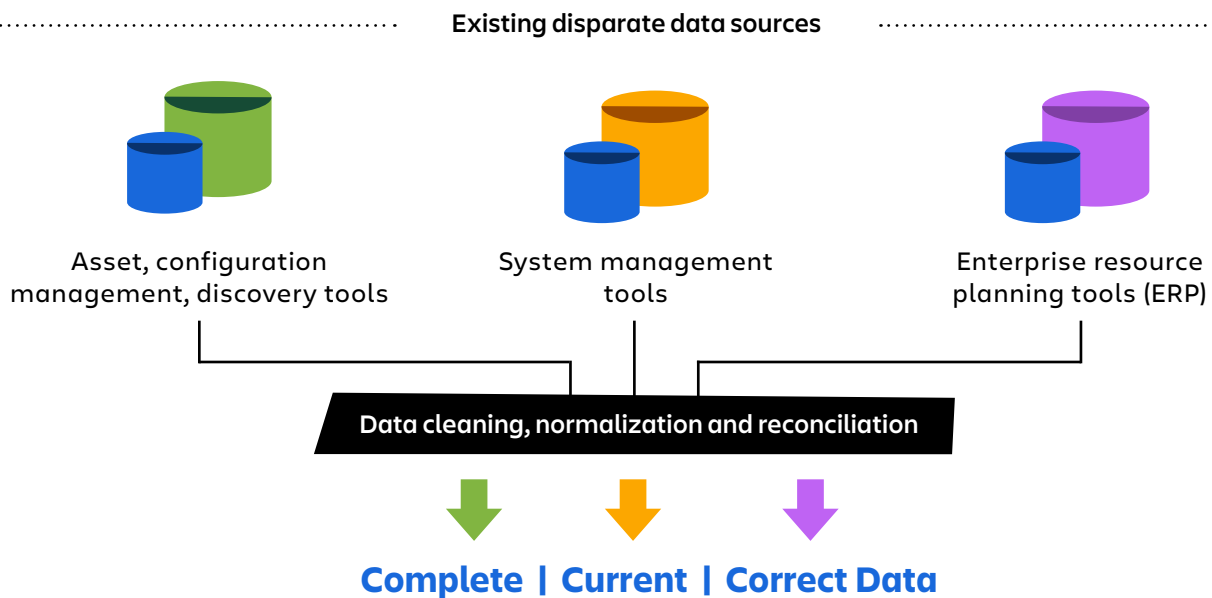
Integrate, clean, reconcile, and analyze data

Assets Data Manager (Data Manager), a Jira Service Management Assets feature, simplifies ingesting, transforming, and reporting on data from multiple data sources. It helps prevent security vulnerabilities, ensure asset and configuration compliance requirements, and improve issue resolution while minimizing the risk associated with changes.



Data that you can trust

With confidence in data quality, teams have the visibility to track relevant data points, understand changes across their environment, and take proactive, data-driven actions.



Data Manager use cases



Incident and Request Management: Data Manager helps maintain inventory accuracy, ensure prompt service delivery, and thoroughly assess incidents to prevent outages and deliver on SLAs.

Change Management: With quality asset data, change managers can make better and more informed assessments of changes and prevent costly business disruptions.

Asset and Configuration Management: Automate the integration, cleaning, and transformation of multiple data sources to ensure your teams have complete, current, and correct data to make informed operational and strategic decisions.

Inventory, Procurement, and Billing: Precise inventory data helps procurement teams negotiate more favorable rates and contracts. Additionally, it provides finance teams with enhanced visibility and traceability for financial depreciation and reporting.

Asset Forecasting and Planning: The availability of high-quality inventory data provides leaders with a clearer understanding of how to strategize transformation initiatives. For example, this includes transitioning to multi-cloud and multi-purpose approaches.

Identifying Security Vulnerabilities: The Data Manager's flexible reporting capabilities help with cross-dataset analysis and identifying vulnerable assets. By leveraging automation, security leaders can streamline actions to correct the respective assets, reducing the risk of security breaches.

Compliance with Industry Regulations: Consolidating and reconciling various data sources enables teams to spot assets that do not meet compliance requirements. For example, failing to maintain essential hardware regularly can result in potential safety hazards and violate industry regulations.

Data Manager: Actionable insights for operational and strategic decisions

With confidence in their data quality, teams can understand changes and their impacts across environments, produce dashboards to track important data points, and improve cross-organizational visibility of asset and configuration data.

Additionally, automating the asset management process keeps everyone informed to take action to minimize operational risks and costs.



Eliminate discrepancies

Data Manager helps you deliver reliable asset and configuration data to various teams. Easily manage, track, and report to maintain asset compliance and security.



Discover vulnerable assets

Data Manager's flexible cross-comparative analysis prevents security breaches by identifying vulnerable assets.



Optimize costs

Reduce costs with Data Manager by gaining complete visibility and traceability for asset depreciation, contract negotiation, and incentives.

Key Features

- Over 30 connectors to top vendors' tools, as well as CSV files and SQL generic connector
- Agentless passive data collection
- Job automation for data ingestion
- Role-based access
- Cleaning and transformation functions
- Data mapping
- Data normalization
- Data reconciliation
- Data anomalies checks
- Expanded data filter capabilities
- Flexible and configurable reporting
- Visibility of asset data from multiple data sources
- Data analysis and comparison
- Venn diagrams for graphic views
- Flexible workflow for asset management automation once data is imported to schemas

Assets tools

Flexera Data Platform | Flexera FNMS | Lansweeper | ServiceNow | Snow

Security tools

Airlock | CrowdStrike Falcon | Flexera Risk Networks | Microsoft Defender | Palo Alto XDR | Qualys | Red Cloak Secureworks | Tenable Security Center | Tenable Vulnerability Management | VMWare Carbon Black Defense | VMWare Carbon Black Protect | VMWare Carbon Black Response

System Management tools

Aptio | Aternity | BigFix | Dynatrace One Agent | Flexera RISC Networks | jamf Cloud | Microsoft Azure VM | Microsoft Active Directory (AD) | Microsoft Entra ID Device | Microsoft Entra ID User | Microsoft Intune | Microsoft SCCM | Microsoft WSUS | nexThink | puppet | SolarWinds | VMware Workspace One - UEM



Important Notes

Data Manager is not a discovery tool, but rather a feature for consolidating, cleansing, and analyzing your data to highlight gaps or data concerns. Currently, the Assets Data Manager feature is not compliant with HIPAA or SOC. Please see the **FAQ** for additional information.



Whether you're already in the Atlassian ecosystem or you're making a switch from legacy CMDB tools, Assets in Jira Service Management can help you modernize your asset and service configuration management practices. To take the next steps in your modernization journey, visit our website and start a free trial of [Assets in Jira Service Management](#).

Learn more at

[Atlassian.com](https://atlassian.com)

© 2024 Atlassian. All rights Reserved. CSD-12224-07/24

